



GMT

1054 Mohawk Road
Burlington

Welcome to 1054 Mohawk Road

Set within one of Burlington's most established and sought-after neighbourhoods, and just a short walk to downtown Burlington and all it has to offer - including vibrant shops, restaurants, and the waterfront - this custom residence delivers a seamless blend of timeless design, refined finishes and a highly functional layout.

A rare offering defined by thoughtful design, quality craftsmanship and an exceptional layout, this home delivers both sophistication and practicality while being walking distance to all downtown Burlington has to offer.

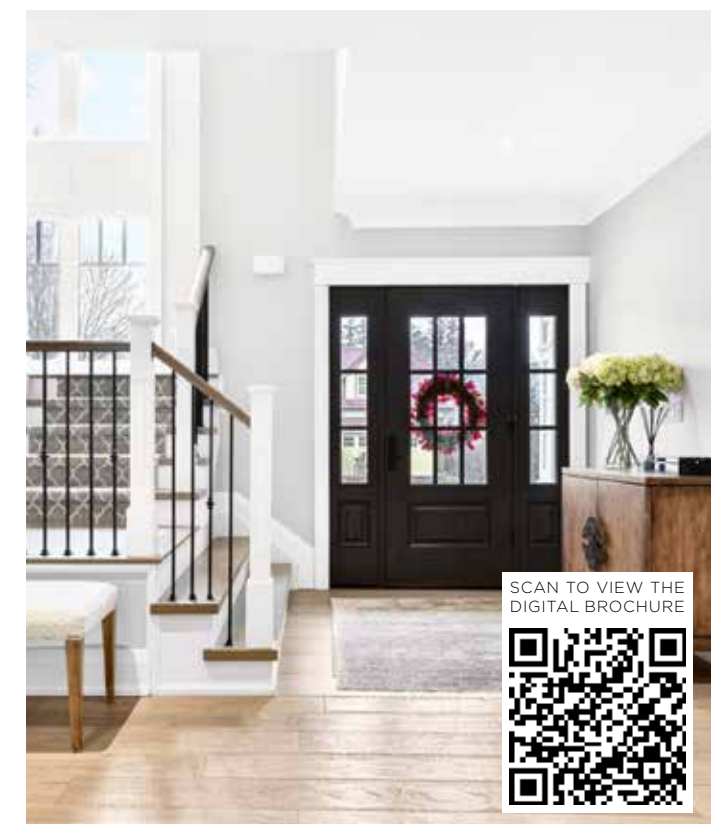
THE GOODALE MILLER TEAM

Listing Agents: Brad Miller & Kieran McCourt



Property Highlights

BEDS	3+1
BATHS	3.1
LOT SIZE	72.06' x 101.98' x 72.06' x 101.90'
ABOVE GRADE	3,209 sq ft
TOTAL SQ FT	5,493 sq ft
TAXES	\$14,107 / 2025



SCAN TO VIEW THE DIGITAL BROCHURE





Main Level

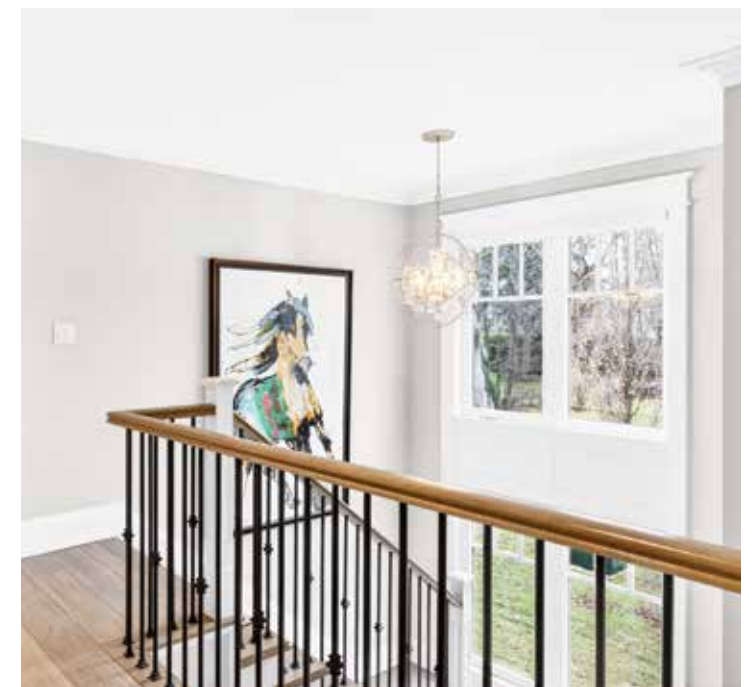
The main level is anchored by a beautifully designed kitchen featuring custom cabinetry, premium appliances, a generous island and a walk-in pantry, offering both style and exceptional functionality. The space opens into the adjoining living and dining areas, where coffered ceilings, expansive windows and a fireplace create a bright, inviting atmosphere. A dedicated main floor office provides a quiet and private workspace, perfectly suited for today's lifestyle.

A rare and highly desirable feature, the main floor primary suite offers the ease of single-level living, complete with a spa-inspired ensuite and well-appointed closet space. A separate main floor laundry room completes this level.





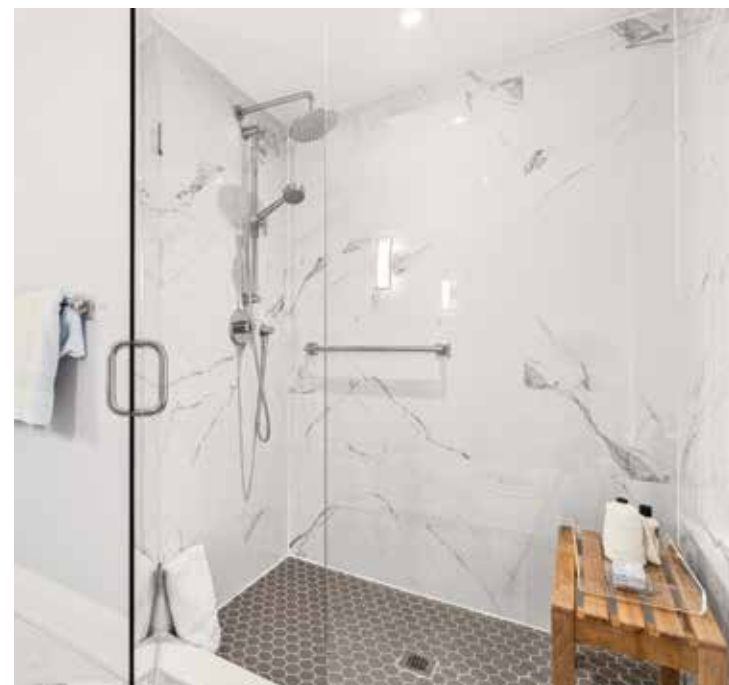






Second Level

The second level is thoughtfully configured with two spacious bedroom suites, each complete with its own walk-in closet and private ensuite, offering comfort and privacy for family members or guests alike.

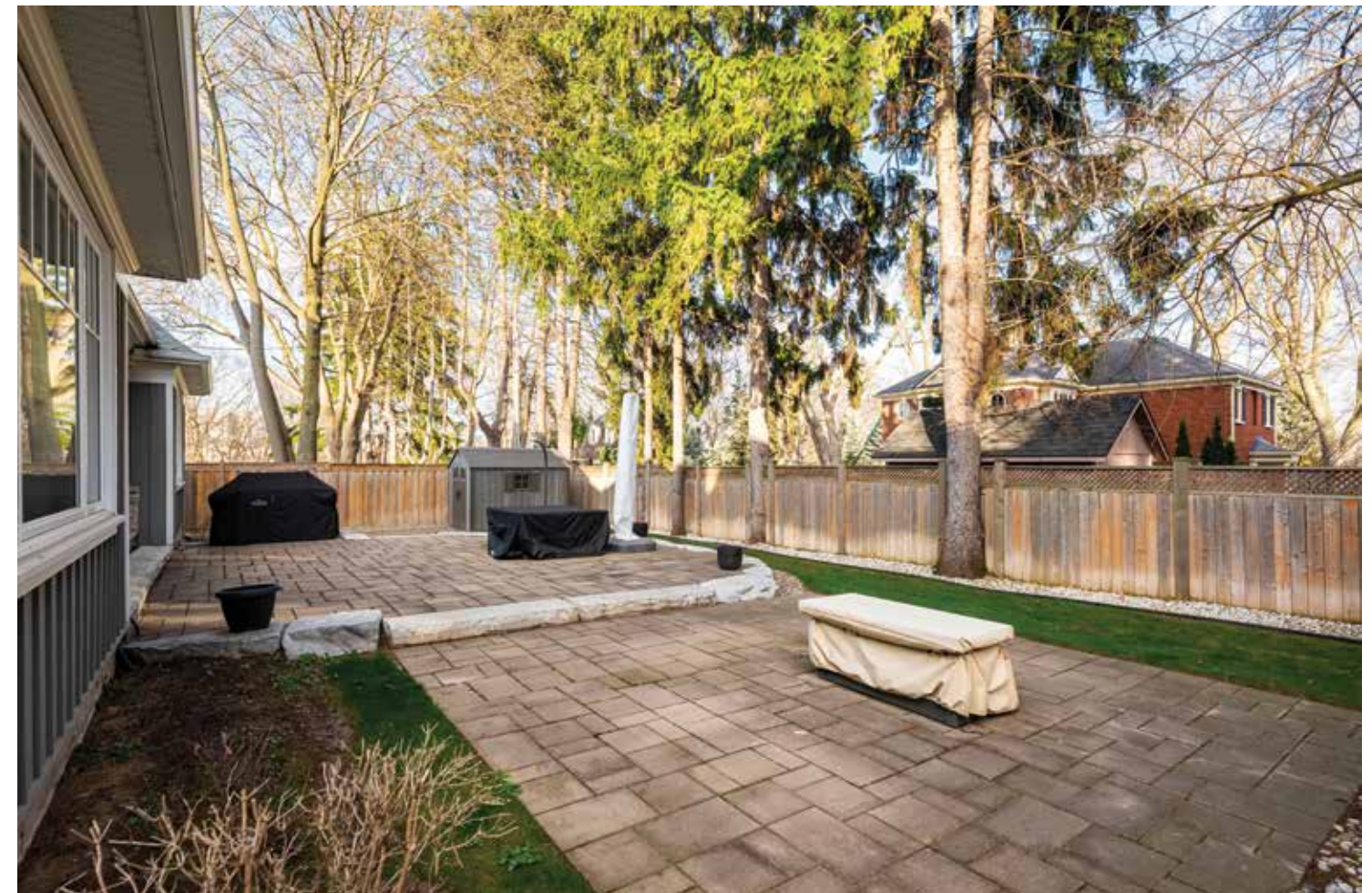




Lower Level

The fully finished lower level extends the home's versatility with a large recreation area, additional bedroom and full bathroom - ideal for guests, teens or extended family.



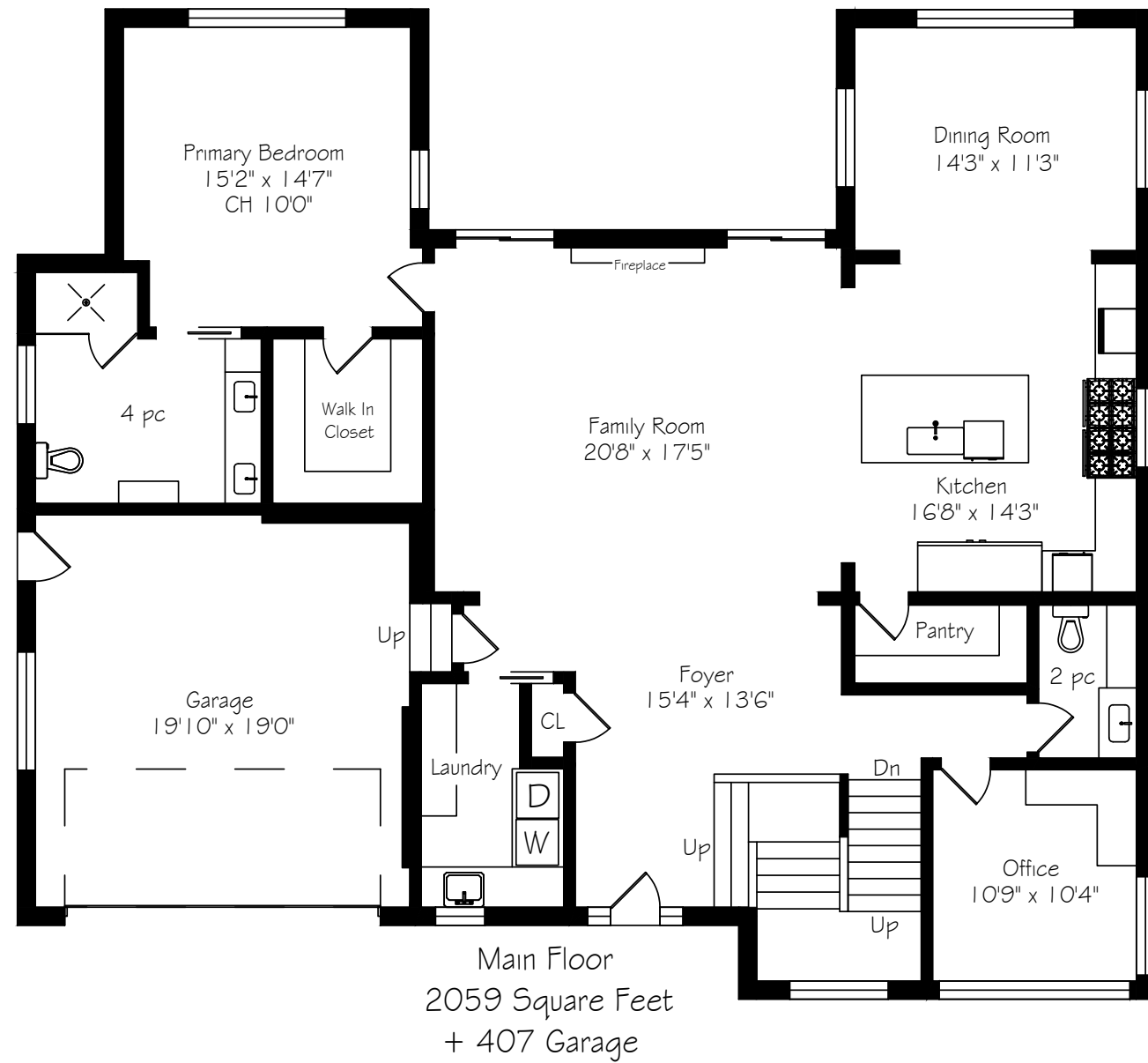


Backyard

Outdoors, the private backyard is designed as a turnkey retreat, featuring professional landscaping, stonework and a covered patio with a built-in fireplace - perfect for enjoying throughout the seasons.

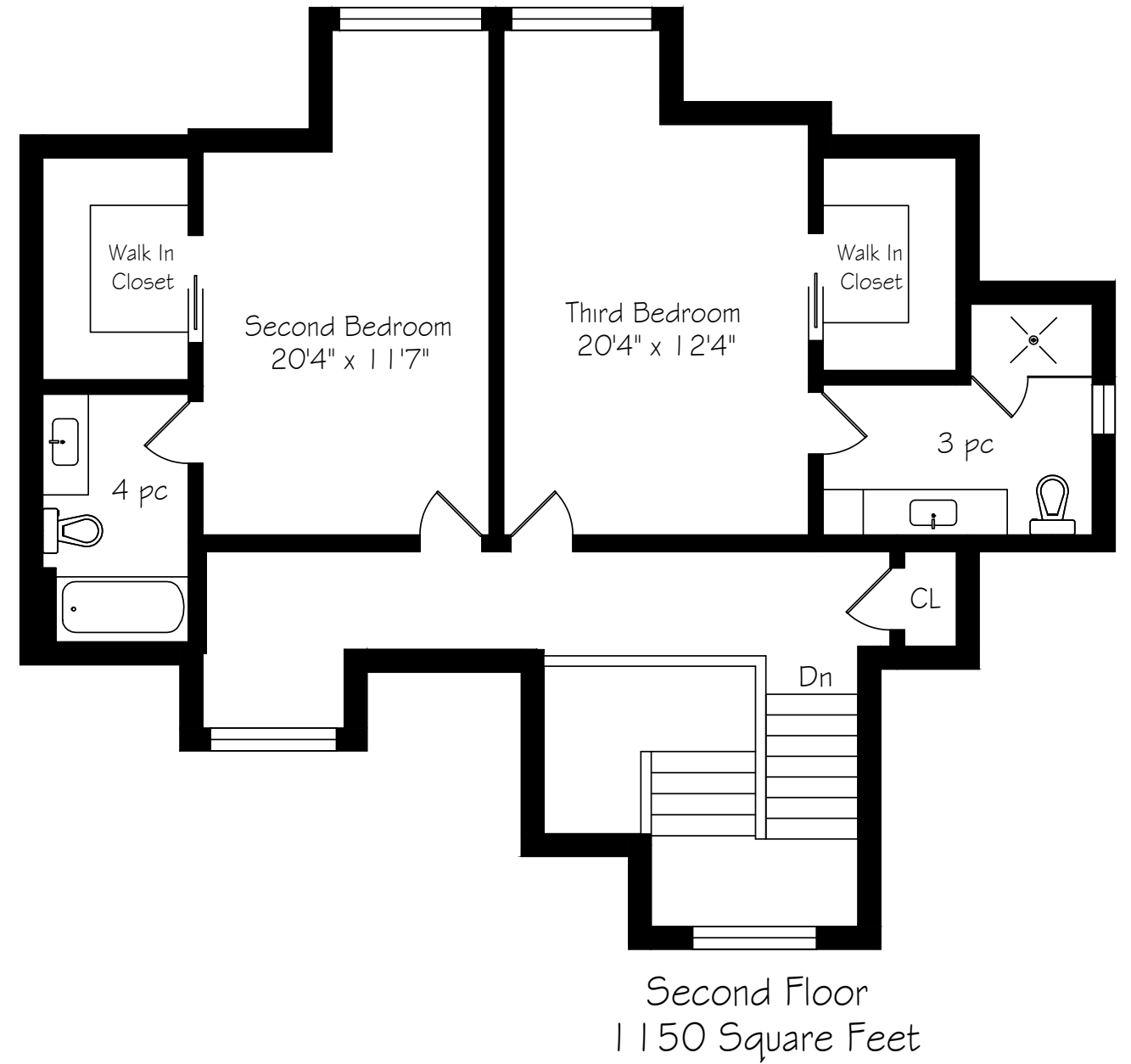


Main Level Floor Plan



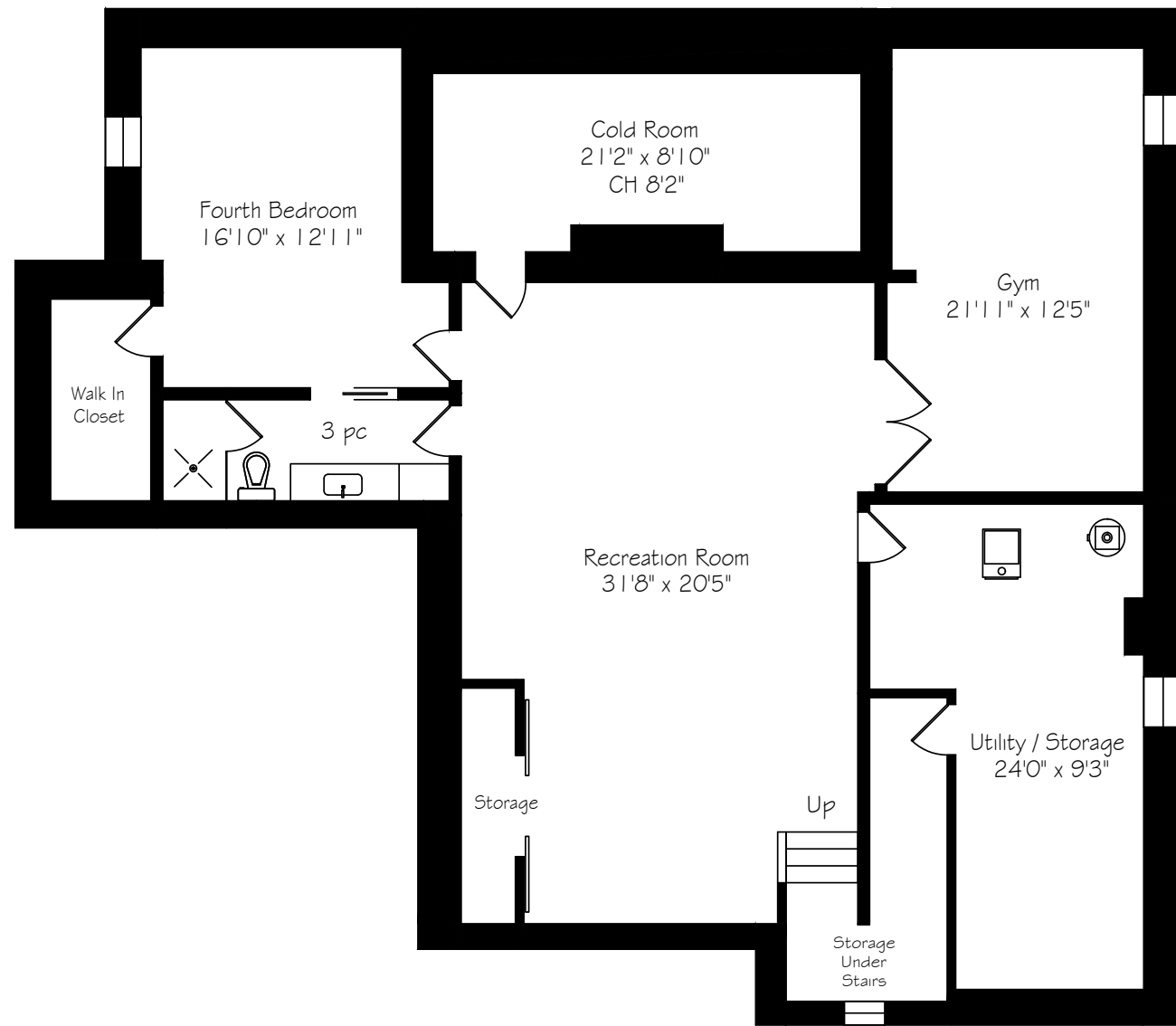
*Room sizes should be considered approximate since measurements are subject to certification.

Second Level Floor Plan



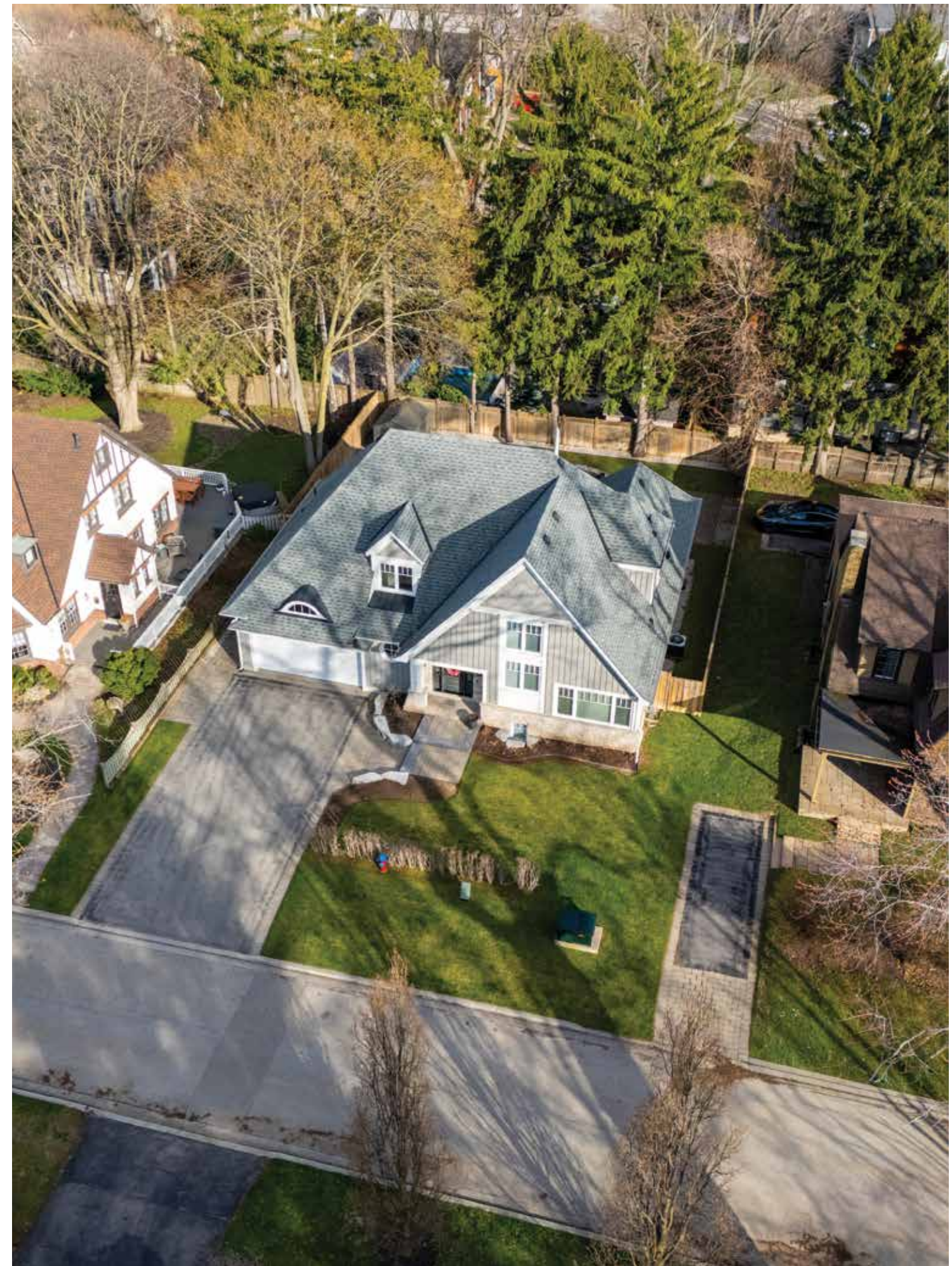
*Room sizes should be considered approximate since measurements are subject to certification.

Lower Level Floor Plan



Lower Level
2284 Square Feet

*Room sizes should be considered approximate since measurements are subject to certification.





GoodaleMillerTeam
CENTURY 21 MILLER REAL ESTATE LTD. BROKERAGE

905.338.2121 | GoodaleMillerTeam.com